

RotaValve™ for Agilent ICP-OES

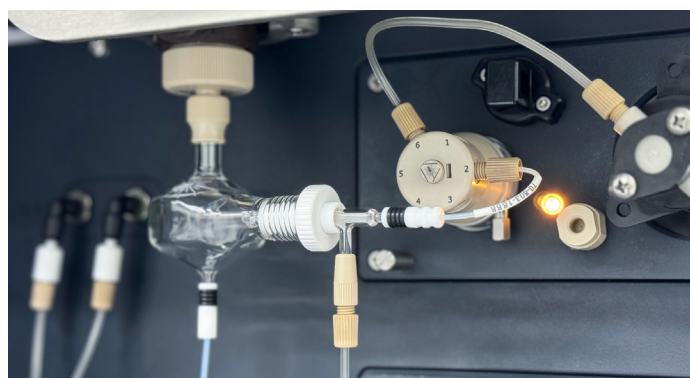
An Enhanced, Switching Valve for AVS System

The RotaValve™ is a **high-precision, durable switching valve** that integrates seamlessly with Agilent 5000 Series ICP-OES systems, maintaining full compatibility with the mechanical, electrical, and fluidic interfaces of the AVS system—while offering enhanced durability and reliability.

Utilizing Flow Injection technology, the RotaValve **reduces analysis time, environmental impact, and operating costs**. Ideal for labs looking to extend system life and cut maintenance without sacrificing performance. Fully compatible with Agilent 5000 Series ICP-OES.

Key Features of the RotaValve:

- **Optimized for ICP:** Purpose-built with low dead volume for precise sample injection and minimal carryover.
- **Purpose-Built for ICP:** Low dead volume minimizes carryover and ensures accurate sample injection.
- **Compact, Efficient Design:** Integrated mixing chamber ensures complete blending of sample and reagent for reliable results.
- **Dual Configuration Flexibility:** Easily switch between 6-port and 7-port setups using a removable Tee, no valve change required.
- **Rugged & Field-Serviceable:** Durable rotor/stator design resists chemicals and wear; only replace worn parts, not the entire valve.
- **Reliable, Leak-Free Sealing:** ¼-28 ratchet fittings provide consistent torque and easy, tool-free sealing, no overtightening guesswork.
- **Seamless Compatibility:** Plug-and-play with Agilent 5000 Series ICP-OES; no software modifications needed.



RotaValve with Nebulizer Connection on Agilent ICP-OES.

Part Number	Description
70-803-1738	RotaValve for Agilent ICP-OES
Part Number	Consumables
70-803-1732	RotaValve Mount Plate, Agilent 6-7 Port
70-803-1734	Rotor for 6-7 Port RotaValve
70-803-1736	RotaValve Body, Agilent 6-7 Port
70-803-1737	RotaValve Coupler
70-803-1747	Thrust Washer, 13mm ID x 16mm OD
70-803-0819	Thrust Washer, 8mm ID x 16mm OD
70-803-1771	Mixer 7 Port RotaValve
70-803-2758	Rotor Sleeve for 6-7 Port RotaValve
70-803-2787	Screw M3 x10mm for RotaValve (PKT 10)
70-803-2788	Screw M3 x16mm for RotaValve (PKT 10)
70-803-0834	Allen Key 2mm
50-100-1754	Rotor Sleeve Alignment and Extraction Tool
70-803-1869	Valve Tubing Kit



GLASS EXPANSION
Quality By Design

Asia Pacific

6 Central Boulevard,
Port Melbourne, Vic 3207,
Australia
(61) 3 9320 1111
enquiries@geicp.com

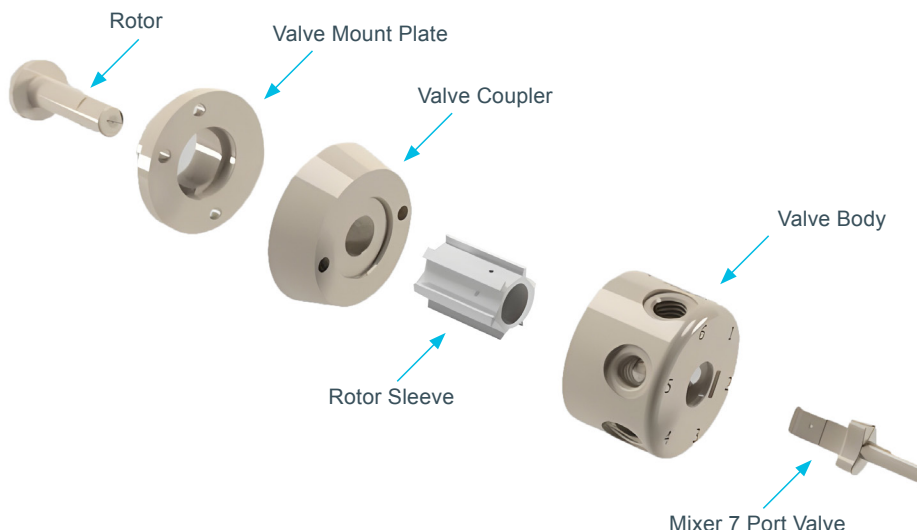
Americas

31 Jonathan Bourne Drive,
Unit 7 Pocasset, MA 02559,
USA
508 563 1800
geusa@geicp.com

Europe

Friedenbachstrasse 9,
35781 Weilburg,
Germany
+49 6471 3778517
gegmbh@geicp.com

P/N 70-803-1738:

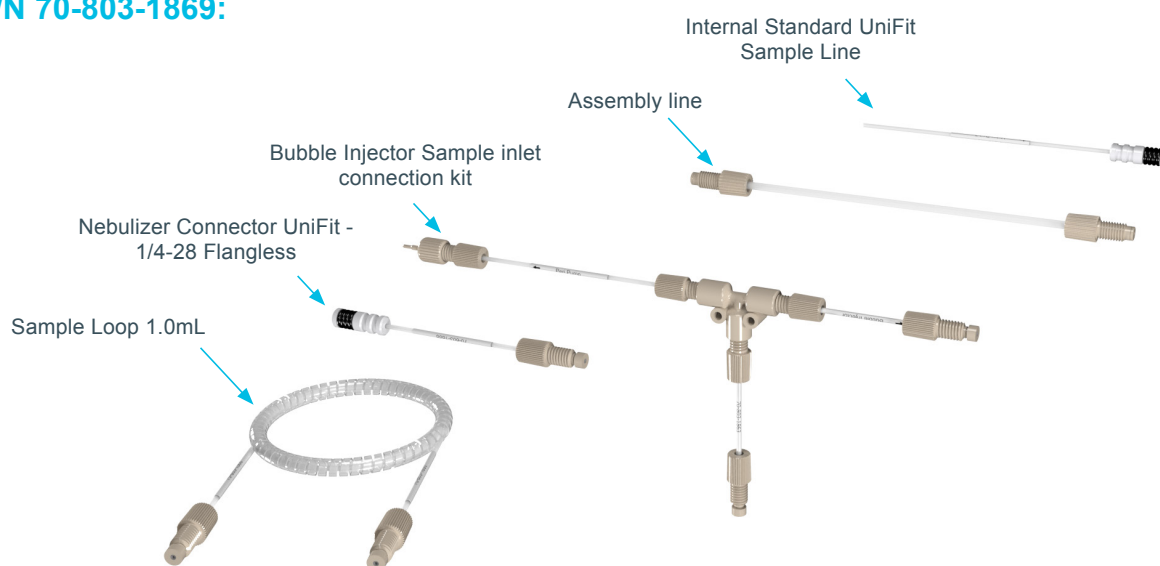


Valve Tubing Kit for Agilent® 5000 Series ICP-OES

- The 6/7 Port Valve has been designed specifically for use in ICP analysis requiring the addition of an Internal Standard or Dilution of the sample. A major advantage is the incorporation of the Tee piece into the Valve design which reduces the number of components required.
- The Valve is made up of one 6 Port Valve and is switched between two positions with a removable Tee piece creating the 7th Port for the Valve.
- All ports on the 6/7 Port Valve have been numbered to allow easy connection to the Valve tubing kit.
- Various Sample Loop sizes available on request
- **Requires Valve Tubing Kit P/N 70-803-1869**

Part Number	Description
70-803-1869	Valve Tubing Kit
Part Number	Consumables
70-803-1850	Assembly line 1/4-28 X 160
70-803-1860	Sample Loop 1.0mL
70-803-1864	Bubble Injector Sample inlet connection kit
70-803-1888	Nebulizer Connector UniFit - 1/4"-28 Flangless, 0.50mm ID x 95mm
70-803-2799	Internal Standard UniFit Sample Line (PKT 3)

P/N 70-803-1869:



For more information visit www.geicp.com or contact us at enquiries@geicp.com