

# D-Torch\* user guide

## Spectro Blue SOP

### 30-808-3614

#### BEFORE YOU START

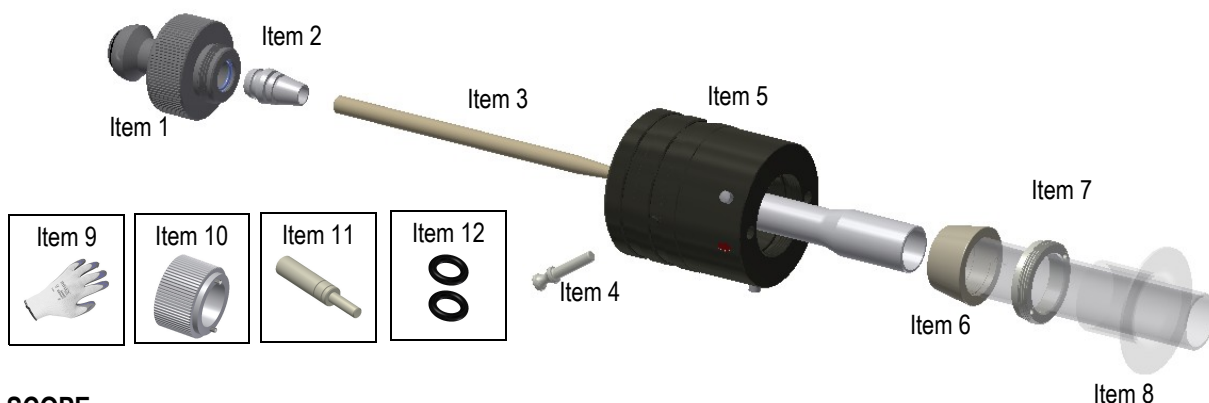
Congratulations on the purchase of your D-Torch.

As supplied, the D-Torch is fully assembled - Table 1, lists all the D-Torch components that can be ordered separately.

Item No.	Part Number	Description	Qty
1	31-808-3596	D-Torch injector adaptor B13	Refer note
	31-808-3651	D-Torch injector adaptor B19	
2	31-808-2962	D-Torch injector ferrule 6.0mm	1
3	Refer note	Injector	Refer note
4	31-808-3628	Plug	1
5	31-808-3605	D-Torch Spectro Blue Body	1
6	31-808-3611	D-Torch Spectro Blue SOP quartz outer tube	1
7	31-808-3595	Retainer	1
8	31-800-0012	Quartz torch bonnet	1
9	SAFEGLOVE-MED	Safety gloves	1
10	70-803-1252	Tool for outer tube retainer	1
11	70-803-0920	Tool for Injector ferrule	1
12	VT-6/2	O-Ring 6mm x 2mm	2

#### Notes;

- Item 1. Two alternative adaptors are supplied - One a B13 type connection, the other with a larger B19 connection. Select and use the adaptor suitable for your application.
- Item 3. D-torch injector not supplied with standard D-torch assembly (Shown for reference only). There are a range of different injectors suitable for this D-Torch – These can be purchased from your D-Torch supplier
- Item 4. Do not remove plug (item 4) from D-Torch body - This plug is only removed when using a ceramic outer tube.
- Item 12. Two seals are supplied for the D-Torch / ICP interface. Use these seal in place of your existing ICP interface o-rings.



#### SCOPE

Pages 2 & 3 of this document will explain;

1. Precautions for personal safety and D-Torch preservation.
2. Remove D-torch outer tube.
3. Re-attach D-Torch outer tube.
4. Access D-Torch injector.
5. Replace injector ferrule.

\* The D-Torch is covered by US Patent 8.232.500 B2

# D-Torch\* user guide

## Spectro Blue SOP

30-808-3614

### 1. PRECAUTIONS FOR PERSONAL SAFETY AND D-TORCH PRESERVATION

- Always wear safety gloves (item 8) and safety glasses when handling ICP torches.
- The D-Torch is made from high grade engineered materials – *handle with extreme care.*
- Do not allow the Torch to be placed on hard surfaces or allow it to come into contact with hard objects.
- It is recommended you review and understand this procedure before handling the D-Torch assembly.

### 2. REMOVE D-TORCH OUTER TUBE

The D-Torch outer tube is accurately located in place with the retainer. The outer tube can be removed at any time by completing the following steps.

- 2.1 If fitted, remove D-Torch assembly from ICP (not shown).
- 2.2 Using the tool (item 11) supplied, unscrew the outer tube retainer (at the tube base) by approximately 1/2 turn.
- 2.3 Grip outer tube (lower end, near D-Torch body) and gently wriggle it from side to side. You will hear a “click” as the outer tube releases.
- 2.4 Then fully unscrew the retainer (item 8) and carefully withdraw the outer tube from the torch body.



Step 2.2



Step 2.3



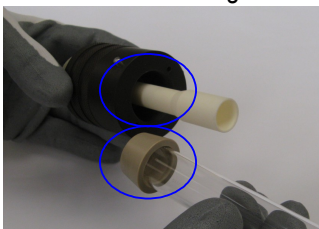
Step 2.4

**Note!** Outer tube is permanently fitted with a tapered ferrule - **Do not** attempt to remove ferrule from outer tube.  
Inner tube is permanently fixed to D-Torch body - **Do not** attempt to remove inner tube from D-Torch body.

### 3. RE-ATTACH D-TORCH OUTER TUBE

To replace the outer tube, complete the following steps.

- 3.1 Check that both locating surfaces (of the outer tube and torch body) are clean and free from damage.
- 3.2 Carefully slide the outer tube over the inner tube – the outer tube will self locate into the torch body.
- 3.3 Fix the outer tube in place with the retainer from earlier - Using the same tool (item 11) apply moderate tightening force - Do Not over tighten.



Step 3.1




Step 3.2



Step 3.3

- 3.4 You can now return the D-Torch to your ICP as normal (not shown).

**Note!** The D-Torch body is branded with an alignment arrow   
Align this arrow with the appropriate indicator on you ICP instrument.

# D-Torch\* user guide

## Spectro Blue SOP

30-808-3614

### 4. ACCESS D-TORCH INJECTOR

#### To remove the injector

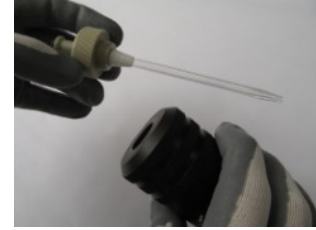
4.1 Unscrew the injector adaptor from the rear of the D-Torch and carefully remove the adaptor from D-Torch body.



Step 4.1



Step 4.1 continued



Step 4.1 complete

4.2 Slide the injector out from the injector adaptor

**Check** condition of the ferrule – Replace ferrule if damaged or deteriorated (refer section 5).



Step 4.2



Step 4.2 complete

#### To re-install Injector to the D-Torch

Repeat steps 4.1 and 4.2 in reverse order.

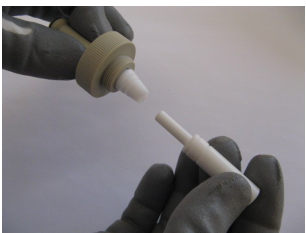
**Critical note!** Push the injector all the way into the adaptor (injector must be seated in the correct position).

### 5. REPLACE INJECTOR FERRULE

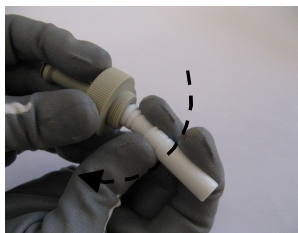
To replace the injector ferrule, complete the following steps: -

5.1 Insert the injector ferrule tool (item 12) into injector ferrule then pivot tool sideways to unseat the ferrule from the injector adaptor - Discard ferrule.

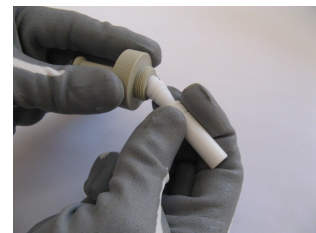
**You may** need to apply a moderately high amount of force to un-seat the injector ferrule from the adaptor.



Step 5.1

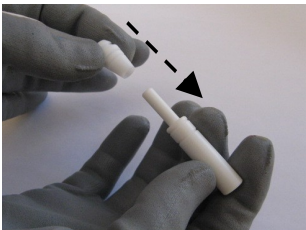


Step 5.1 continued

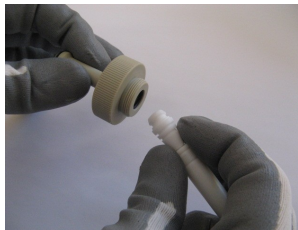


Step 5.1 complete

5.2 Place a new injector ferrule (item 2) onto the stem of injector ferrule tool. Position the ferrule into the adaptor and push together until you feel the ferrule 'seat' with adaptor o-ring.



Step 5.2



Step 5.2 continued



Step 5.2 complete

**Hint!** It will help if you pivot the injector ferrule tool (like step 5.1b) whilst pushing-in the injector ferrule.

**Finished!** If you have any questions regarding the D-Torch assembly or this procedure, please contact your supplier.